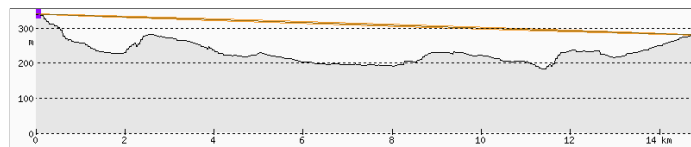
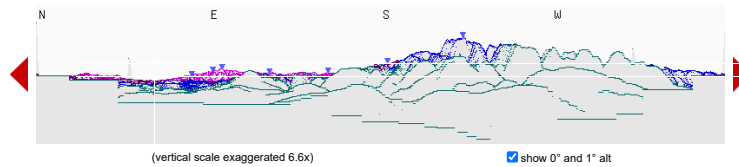


All panoramas View singrist New panorama Print

singrist latitude 48.676176 N longitude 7.391662 E elevation 340m above sea level (2m above ground) https://www.heywhatsthat.com/?view=NNEVPN6X

Email this panorama View in Google Earth: day night In Stellarium Use magnetic north



Parameters table with fields for frequency (122000), refraction (0.305), fixed exaggeration (2), and radio options (flat Earth, curved Earth, plate carée, great circle).

Hide profile 1

Show profile 2

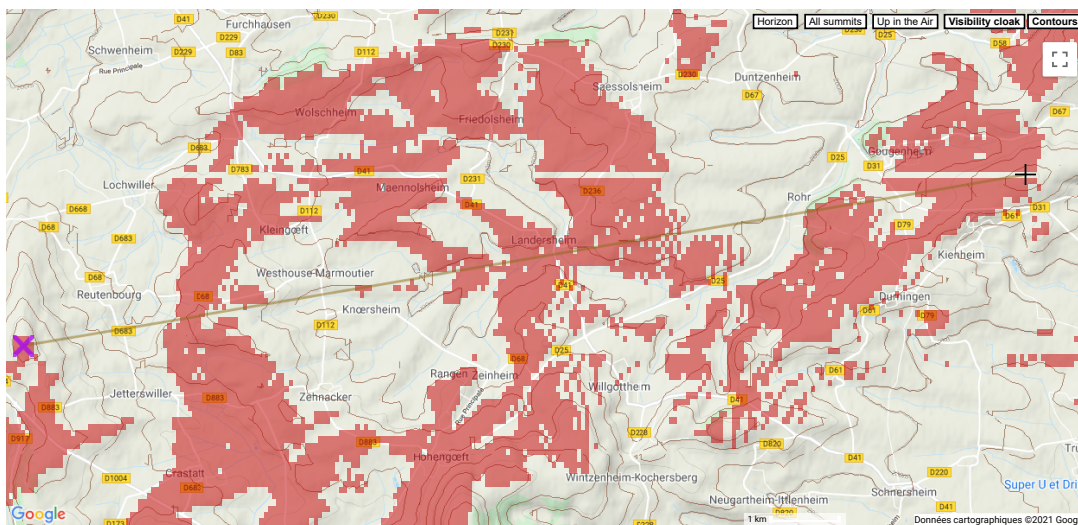


Table of peaks: 81° Merkur (66 km, 0m), 93° Mehlskopf (63 km, 1008m), 97° Hornisgrinde (60 km, 1164m), 122° Reiherskopf (68 km, 0m), 153° Feldberg (100 km, 1493m), 184° Heidenkopf (23 km, 0m), 223° Le Schneeberg (11 km, 0m).

(Bearings are true; for magnetic bearings subtract 2° or click here) show aits

48.698781 N 7.591508 E 280m bearing 80° 15 km alt -0.29° compute LOS English Metric DD.DDDDD° DD° MM.MMMM' DD° MM' SS.SS' decimal places (0-6) 0 Pan to singrist

Commencer ici

- 1. Cliquez sur "Commencer ici"
2. Activez votre compte
3. Accédez à votre contenu